

A smart sense of hospitality.



INNOVATIVE 8

Discover our solutions
for hotels.

WORLDWIDE 14

Experience our
products in use.

SUSTAINABLE 16

Find out more about our
sustainability issues.



Dear Reader,

I'm sure you have all stayed in a hotel on occasion. Whether for a relaxing break on vacation or a productive business trip, you want to be able to rely on a high degree of comfort and security. That is why our solutions for access control and room management ensure that you feel completely at ease throughout your entire hotel stay – from check-in to departure. Each solution is innovative and customized to the individual requests and needs of our customers. Whether function, design or quality – we always strive to achieve the very best solution. Our products can be found all over the world, whether in a charming boutique hotel such as the MOTTO in Vienna or in a luxurious resort such as the Emirates Palace

»Whether function, design or quality – we strive to achieve the very best solution.«


Dr.-Ing. Jörg Teunissen
CEO

in Abu Dhabi. Accordingly, they are designed for compatibility, durability and energy efficiency, as sustainability is also a topic which is close to our heart as well as being firmly anchored in our corporate DNA. This includes economic and environmentally-conscious action as well as the promotion and further development of our employees at all sites. Always with the goal of making a positive contribution toward a future world worth living in. Together with you, our valued customers, partners and stakeholders, we look forward to shaping the future of the hospitality industry. Thank your for the trust you have placed in us.

Contents

COMPANY	04
Good reasons to choose MESSERSCHMITT Systems	
Althoff Seehotel Überfahrt	06
Reference, Rottach-Egern	
Solutions	08
SERVICES	12
From individual planning to professional installation	
Emirates Palace	14
Reference, Abu Dhabi	
Hotel MOTTO	15
Reference, Vienna	
Sustainability	16
Team	18

Gender note: For reasons of readability, no gender-neutral differentiation is made. Corresponding terms apply in principle to all genders.

04



12





What sets us apart



3 solution areas



Tailor-made
"made in Germany"



More than
100 employees



Focus on
sustainability



More than 30 years
of experience



Decades-long
service guarantee



More than 2,500
global references



Certified to
ISO 9001

High-tech with tradition

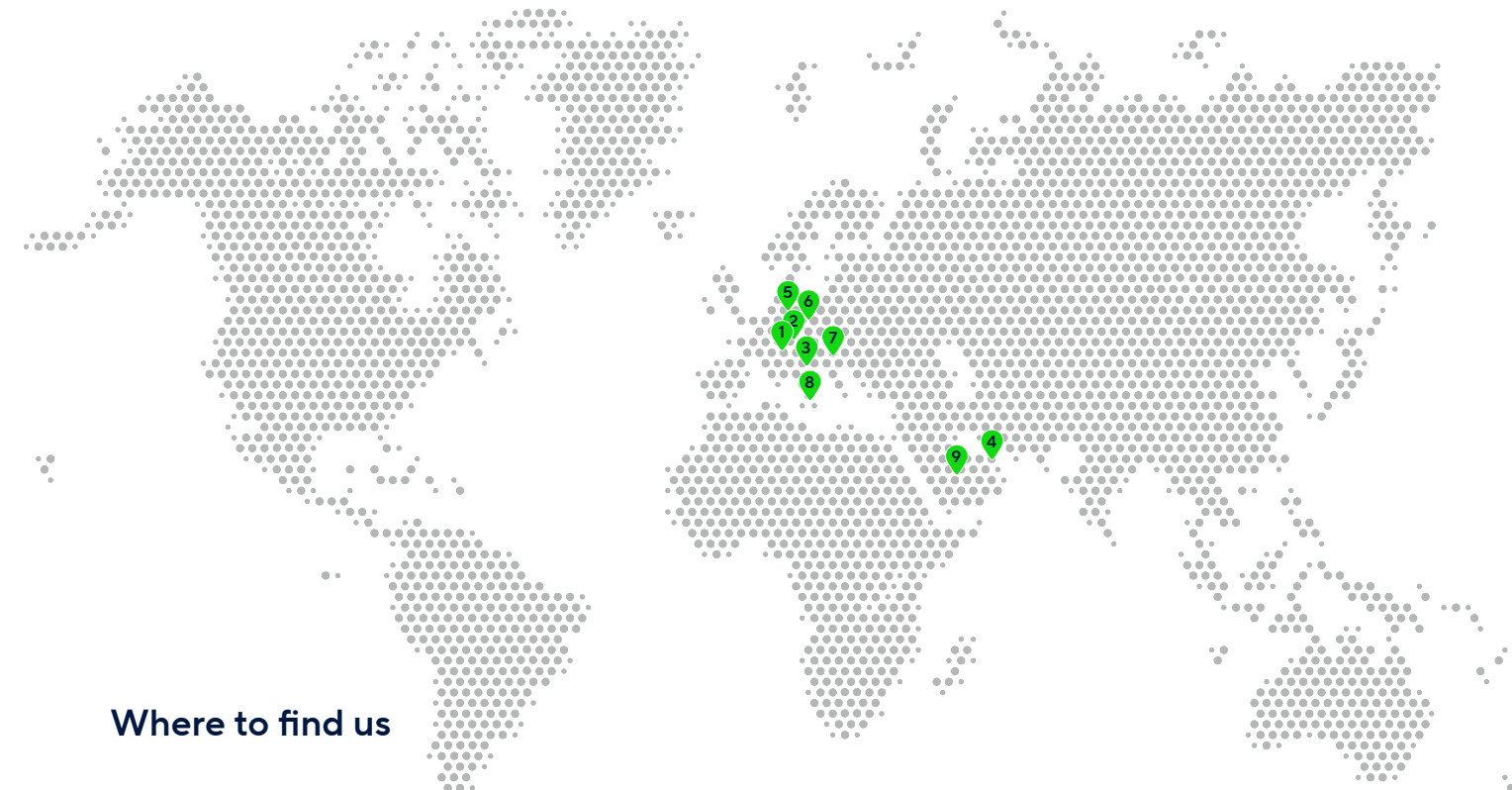
Innovative, smart, sustainable: from contactless access control to intuitive room control, we supply highly customizable products for future-proofing your hotel operations.

»Our recipe for
success: We grow
with every challenge
and every new
customer request.«

Markus Schiefer
CFO

Since its foundation in 1985, the key topic for MESSERSCHMITT Systems has been safety. Originally operating in the field of access control for highly-sensitive areas such as research and development, we have since become the preferred partner of the hotel industry, creating the guest experience of the future together with our customers through technological advancements.

Today, we are a leading international manufacturer of hardware and software solutions for access control and room control in the hotel industry, and meet the individual requirements of our customers with the help of modular systems, flexible manufacturing processes, and our high level of consulting and service expertise. In doing so, we always strive to achieve the best possible result.



Where to find us

1 Headquarters

MESSERSCHMITT Systems GmbH
90571 Schwaig near Nuremberg

2 Production site

MESSERSCHMITT Systems GmbH
98544 Zella-Mehlis

3 Austria

MESSERSCHMITT International GmbH
1190 Vienna

4 United Arab Emirates

MESSERSCHMITT International
Dubai

5 Germany

AVLcon UG
16833 Fehrbellin

6 Poland

WANO Solutions
62-030 Luboń k. Poznań

7 Bulgaria

Eurodesign Systems Ltd
Sofia 1113

8 Italy

ACES GmbH
39037 Mühlbach

9 Saudi Arabia

alfanar Group
11411 Riyadh

Customized guest experience

MESSERSCHMITT Systems and the Althoff Seehotel Überfahrt have a long-standing cooperation, which the customer hoped to continue by modernizing its access control systems. Customized and digital solutions are used for this purpose.

Right on the banks of the picturesque Lake Tegernsee, the Althoff Seehotel Überfahrt is part of the prestigious Althoff COLLECTION – individual 5-star hotels in exclusive destinations that offer excellent culinary delights as well as exceptional beauty and spa services at the highest level. This luxury hotel has been using access control solutions

from MESSERSCHMITT Systems since 2004. The customer also wanted the durable products and reliable service of the Nuremberg-based company for modernizing its systems. In an effort to retain the special ambience, the new solutions were to be seamlessly integrated into the existing building infrastructure and technology.

Althoff
SEEHOTEL
ÜBERFAHRT
Tegernsee



During check-in, you will receive the keycard or mobile key for your convenient room access



Located in the Tegernsee Valley, the 5-star hotel invites its guests to enjoy and relax

DIGITAL COMFORT

The MESSERSCHMITT offline and on-line systems adapted to the latest requirements expand access by keycard to include the option of a mobile key, which gives guests convenient access to their rooms via smartphone. The “Digital Guest Experience” is rounded off by a digital guest folder (see *info box*).

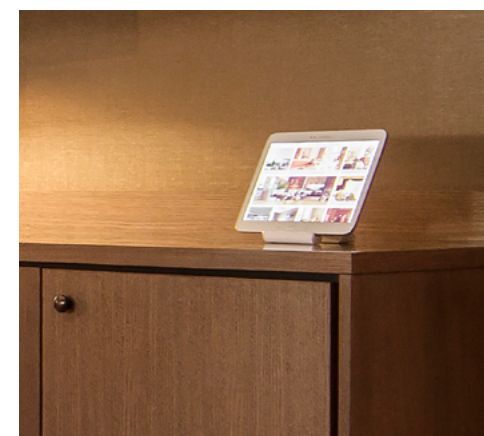
INDIVIDUAL DESIGN

For a consistent corporate design, MESSERSCHMITT Systems can adapt all finishes to individual customer requests: HAFI fittings in chocolate brown and graphite gray are used for the room doors and in the spa area. Wall readers made of elegant gray-brown glass are manufactured in special sizes and equipped with many functions including an RFID reader and a bell. LED buttons light up as required to ensure privacy and a comfortable stay for guests.



Discover projects around the world – scan the QR code or go to

www.messerschmitt.com/en/references



»We are very
satisfied with the
design and
outstanding service.«

Martin Rose

Technical Manager at Althoff Seehotel Überfahrt



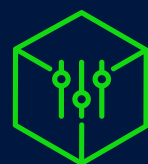
SUSTAINABLE GUEST MANAGEMENT

Efficient and sustainable management enables hotels to meet the increasing expectations of their guests as well as make a valuable contribution toward environmental protection. Digital solutions offer significant support in this regard. For example, the digital guest folder, such as the one at Althoff Seehotel Überfahrt, is an environmentally-friendly alternative to printed copies and allows guests to always access up-to-date hotel information on their own smartphones.

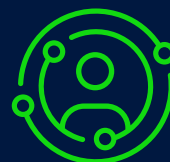




ACCESS CONTROL



ROOM CONTROL



DIGITAL GUEST EXPERIENCE

From contactless access control to intuitive room control, we supply highly customizable products for future-proofing your hotel operations. Thanks to their modularity and the numerous interfaces, the components can be connected to form comprehensive solutions and easily integrated in existing infrastructures as required.

Price-conscious & smart

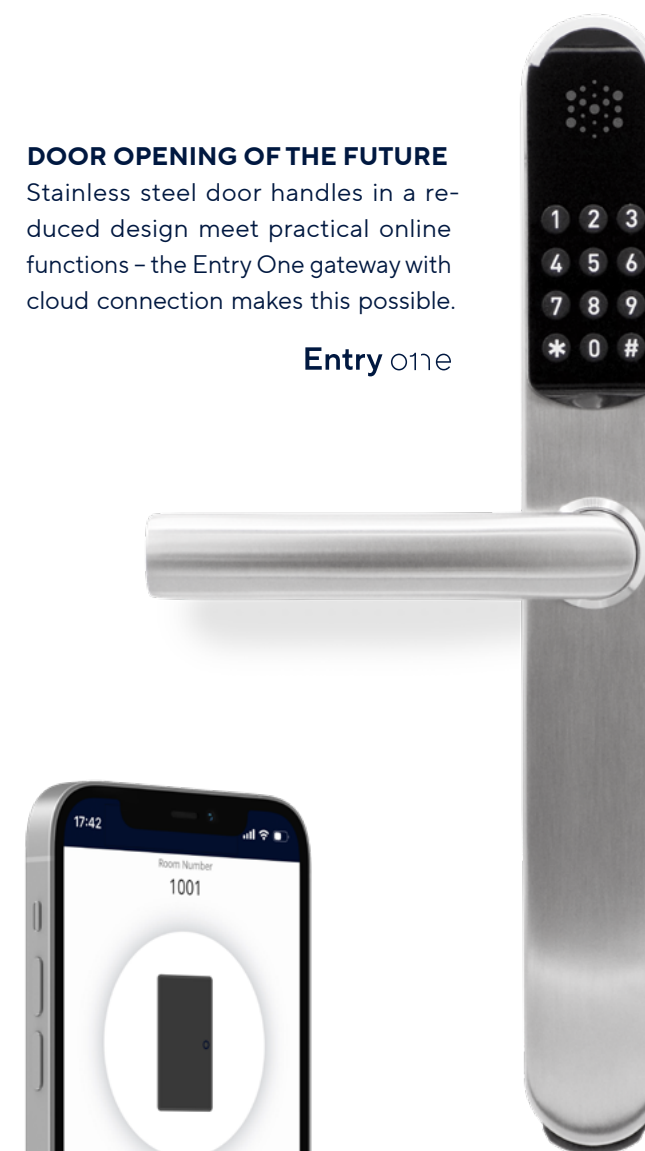
Seamless integration, comprehensive functions, and maximum convenience: improve the efficiency of your hotel and optimize your costs with our innovative guest experience products.



DOOR OPENING OF THE FUTURE

Stainless steel door handles in a reduced design meet practical online functions – the Entry One gateway with cloud connection makes this possible.

Entry one



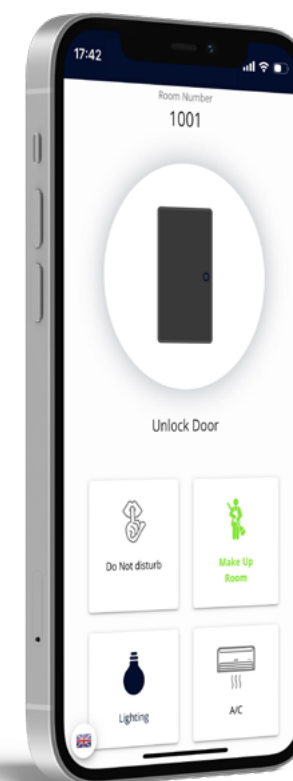
PERSONALIZED GLASS PANEL

Select your individual panel with an elegant glass surface from a wide variety of colors and functions.



DIGITAL CHECK-IN/OUT

Your guests have everything in their own hands with their own mobile end device: from the digital check-in and keyless access to the room to departure without waiting times.



Premium quality meets energy efficiency

Whether a boutique hotel or a major hotel chain: combine aesthetics, economy and sustainability with our intelligent products along the entire guest journey, tailored to your needs.

SIEMENS

SAMSUNG

DAIKIN

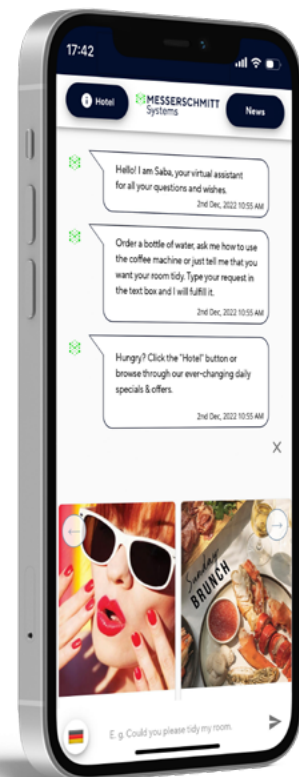
LG

TOSHIBA



ALL-IN-ONE WALL READER

The transponder smart card reader in its discreet glass design replaces the classic controller in the control cabinet, thus enabling all tasks such as door opening and control of light, air conditioning and blinds quite simply via software. Energy-efficient guest presence recording can significantly reduce costs and effort.



VIRTUAL HOST

Based on artificial intelligence (AI), the chatbot handles basic interactions, overcoming language barriers and saving valuable personnel resources.

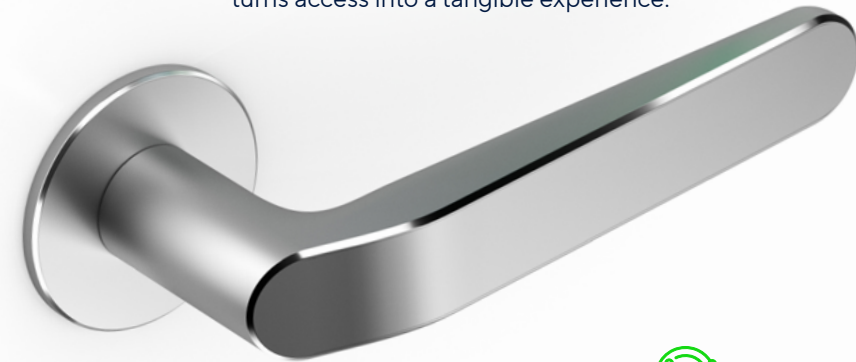
Luxury across the board

Set new standards in exclusivity and individuality and transform your hotel rooms with our solutions into smart environments that meet the high expectations of your guests.



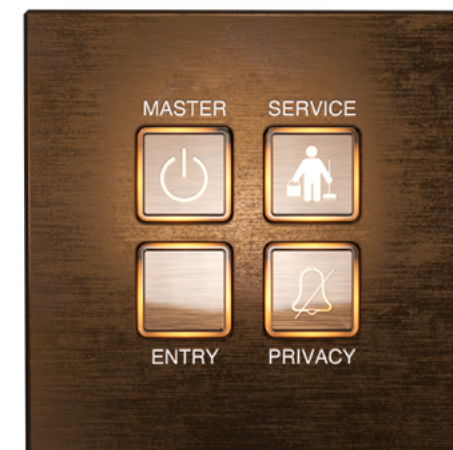
PREMIUM DOOR OPENING

Modern RFID technology meets timeless elegance: the award-winning HAFI fitting designed by Studio F. A. Porsche turns access into a tangible experience.



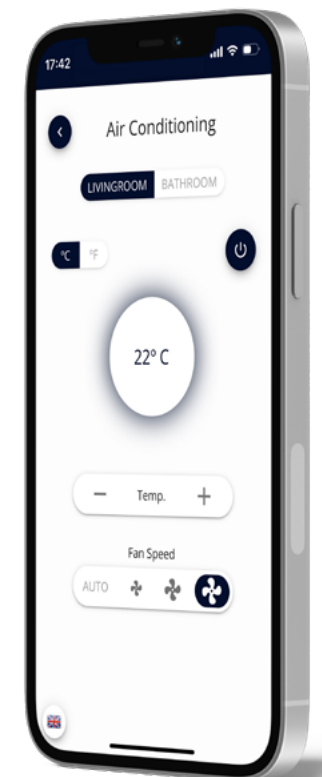
DIGITAL ROOM CONTROL

From room temperature to lighting to drapes, your guests control all room functions from their own mobile device.



LUXURY LINE

Our mechanical panels with intuitively understandable icons give you the choice between elegant surfaces, individual colors, and many practical functions.





From individual planning to professional installation

We develop and produce customized one-off products that fully meet our customers' requirements. Our strengths lie both in detailed design and in the programming of special solutions.



Contact us to discuss your individual solution – via QR code or at

www.messerschmitt.com/en/arrange-appointment

Individual solutions

Apart from standard designs of our products, we also offer individualization options – for innovative access control and room control solutions that fit seamlessly into your building concept.



Wide range of
colors and shapes



Personalized
design



Premium
quality



Configurable
functions



Your system in the best of hands

We handle not only the competent planning and production of your multifunctional keycard and room management systems but also its expert installation – without hiring outside companies.



Digital
locking systems



Controls
for lighting



Room status
panels



Usage-dependent
consumption control



Software and interfaces

Whether housekeeping systems, room management applications or building automation – our web applications and software solutions guarantee maximum compatibility.





A fairytale Arabian palace: the Emirates Palace in Abu Dhabi

Luxury like the Arabian Nights

Not only the magnificent rooms and suites, but also the new MESSERSCHMITT systems promise pure luxury at the Emirates Palace.



STRIKINGLY LUXURIOUS

Luxury that bids you welcome: when replacing the access control solutions, the customer opted for transponder smart card readers, which blend seamlessly into the characteristic wall design next to the doors.

A ROOM IN GOLD

The MESSERSCHMITT panels with mechanical buttons allow intuitive control of drapes, lighting and room temperature, skillfully rounding off the luxurious interior with elegant surfaces in a matt-gold finish.



SUSTAINABLE PARTNERSHIPS

MESSERSCHMITT Systems has a long-standing partnership not only with the Emirates Palace. Many of our customers value the durability and modularity of our products, which make retrofitting possible in modernization projects. This means they can rely on high-quality, environmentally-friendly solutions, and sustainable profitability.



A special highlight: the design of the room thermostat adopts the round, porcelain look of the switches



Modern comfort with a nostalgic flair

In the Hotel MOTTO, smart solutions from MESSERSCHMITT Systems combine nostalgic interior design with the latest technology to create a harmonious guest experience.



INDIVIDUAL AMBIENCE

Keycard systems in bronze design with Italian brass handles on the doors and a luxurious-looking elevator reader with intelligent floor control fit perfectly into the nostalgic ambience.

MODERN FUNCTIONS

For comfort at any time of day or night, all rooms at MOTTO have a room control system that controls blinds, room temperature and lighting in an energy-efficient manner depending on guest presence.



SUSTAINABLE ROOM MANAGEMENT

One important aspect of sustainability is to conserve resources. That is why at MESSERSCHMITT Systems, we develop solutions for guest presence detection, for example, as used here in Hotel MOTTO, in order to operate the lowest possible energy consumption in the event of absence. This reduces costs as well as the environmental impact of the hotels.

Focus on sustainability

The topic of sustainability is more than a mere trend for us. In view of climate change, resource scarcity, and growing social responsibility, it is now more important than ever to actively and innovatively promote sustainable production.



As a forward-thinking company in the tech sector, we at MESSERSCHMITT Systems strive to conduct all of our corporate activities in a responsible and environ-

mentally-conscious manner. This ranges from product development through the supply chain and production to continuous improvement and reliable reparability.



Find out more about our core topics – via QR code or at

www.messerschmitt.com/en/sustainability



SUSTAINABLE PRODUCT DESIGN

New developments at our company are always geared to sustainability, as demonstrated by our energy-saving systems and innovative keycards* made from renewable raw materials.



RELIABLE REPARABILITY

Thanks to modular construction, our products are easy to repair and retrofit. This helps us to counteract the throwaway trend in the electronics industry.



ENERGY-SAVING CONCEPTS

Power-saving solutions such as guest presence detection reduce costs as well as the environmental impact of hotels.

CONTINUOUS IMPROVEMENT

There are always new ways to discover even better, more efficient solutions. That is why we maintain a great openness to the wishes and suggestions of our employees and customers.



»In the future, we want to record all our measures in a transparent sustainability report.«

Dr.-Ing. Jörg Teunissen
CEO

LONG PRODUCT LIFE CYCLES

To ensure life cycles which are as long as possible, we keep spare parts available for a long period of up to 20 years. This enables us to provide our customers with high-quality, environmentally-friendly products, and sustainable profitability.



SHORT SUPPLY ROUTES

Thanks to our German production site, we can guarantee the highest quality standards and keep supply routes to a minimum. By increasingly shifting our supplier base to Germany/Europe, we are reducing transport routes and emissions.

20 years

*Discover O-Key – our environmentally-friendly RFID keycard made from the wood of the ginkgo tree: [messerschmitt.com/en/sustainable-keycard](https://www.messerschmitt.com/en/sustainable-keycard)

At your service

Management



Dr.-Ing. Jörg Teunissen
CEO
Friedenstraße 3
90571 Schwaig near Nuremberg, GER
joerg.teunissen@messerschmitt.com



Markus Schiefer
CFO
Friedenstraße 3
90571 Schwaig near Nuremberg, GER
markus.schiefer@messerschmitt.com



Ernst Franz
SVP Global Sales
Hackhofergasse 1
1190 Vienna, AUT
ernst.franz@messerschmitt.com



Khaldoun Al Batlouni
Managing Director Dubai
Unit No. 909 Jumeirah Bay 2, P.O. Box 337160
Dubai, UAE
khaldoun@messerschmitt.com



René Lücke
Managing Director Vienna
Hackhofergasse 1
1190 Vienna, AUT
rene.luecke@messerschmitt.com



Manuel Schmidt
Plant Management
Meininger Straße 33
98544 Zella-Mehlis, GER
manuel.schmidt@messerschmitt.com



Gerald Wingelhofer
Head of Manufacturing & Development
Meininger Straße 33
98544 Zella-Mehlis, GER
gerald.wingelhofer@messerschmitt.com

Strong brands, strong people: every day, the MESSERSCHMITT team gives its best to fulfill the wishes of our customers.

MESSERSCHMITT Systems stands for many years of successful entrepreneurship combined with an agile start-up mentality. As one of the world’s leading manufacturers of hardware and software solutions for access and room management, we offer our customers reliable technologies “made in Germany.” Whether sales, production or service: our total of over 100 MESSERSCHMITT employees all over the world are at work for you, shaping the future of hospitality.

Sales



Klaus Ritzki
Senior Sales Consultant
Friedenstraße 3
90571 Schwaig near Nuremberg, GER
klaus.ritzki@messerschmitt.com



Aleksandr Gavrilov
Manager Internal Sales
Friedenstraße 3
90571 Schwaig bei Nürnberg, GER
aleksandr.gavrilov@messerschmitt.com



Steffen Kawalek
Key Account Manager East
Friedenstraße 3
90571 Schwaig near Nuremberg, GER
steffen.kawalek@messerschmitt.com



Tobias Bräuer
Key Account Manager West
Friedenstraße 3
90571 Schwaig near Nuremberg, GER
tobias.braeuer@messerschmitt.com



Rainer Döge
Key Account Manager North
Friedenstraße 3
90571 Schwaig near Nuremberg, GER
rainer.doeger@messerschmitt.com



Louis Velke
Manager After Market
Friedenstraße 3
90571 Schwaig bei Nürnberg, GER
louis.velke@messerschmitt.com



MESSERSCHMITT Systems GmbH

Friedenstraße 3

90571 Schwaig near Nuremberg

T +49 911 91999-0

F +49 911 91999-99

fo@messerschmitt.com

www.messerschmitt.com

